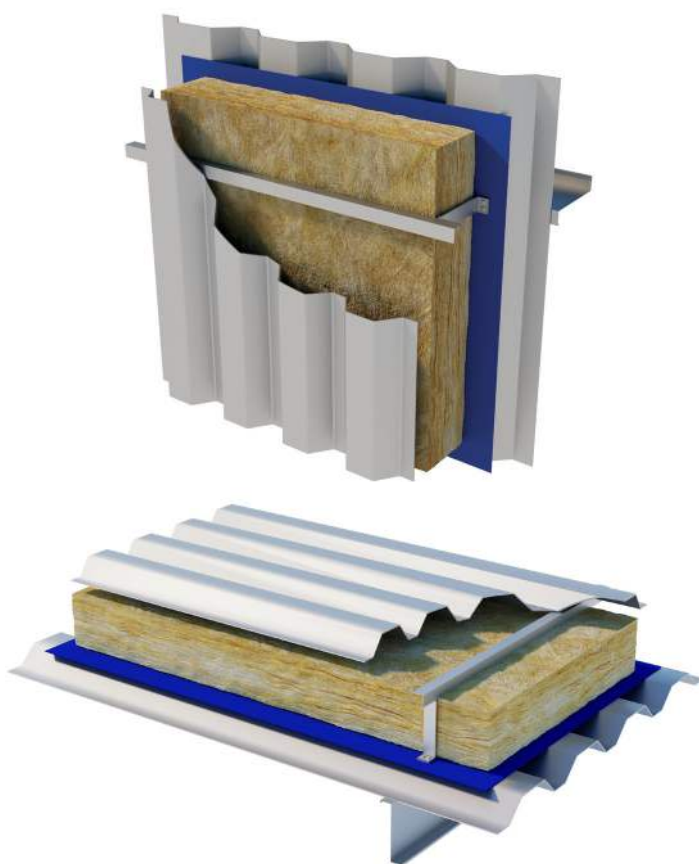


Cladding Mat 40.

April 2024 | Data Sheet



Description.

Superglass Cladding Mat 40 is a non-combustible glass mineral wool insulation roll. The roll is supplied 1200mm wide to allow quick and easy installation in commonly used rail and bracket systems.

Application.

Superglass Cladding Mat 40 is designed to provide thermal and acoustic insulation in the walls and roofs of twin skin profiled metal clad systems and portable & modular buildings.

Performance.

Thermal Conductivity:

Declared thermal conductivity (lambda (λ) value) of 0.040W/mK.

Fire Classification:

Deemed non-combustible with a fire classification of Euroclass A1 (the highest possible rating) when tested to BS EN 13501-1 Reaction to Fire.



Typical applications:

Twin skin profiled metal clad systems.



Thermal
Insulation



Non-
combustible



Easy to
Install



Recycled
Content

Intelligent Environments
Superglass

superglass.co.uk

Cladding Mat 40.

Technical Characteristics.

Product Specification.

Thickness (mm)	Length (m)	Width (mm)	Pack Area (m ²)	Packs per pallet	Thermal Conductivity (W/mK)	Thermal Resistance (m ² K/W)	Product Code
60	16.00	1200	19.200	24	0.040	1.50	2144217
80	12.10	1200	14.520	24	0.040	2.00	2144265
90	10.65	1200	12.780	24	0.040	2.25	2144264
100	9.95	1200	11.940	24	0.040	2.50	2144263
120	8.05	1200	9.660	24	0.040	3.00	2144262
140	7.00	1200	8.400	24	0.040	3.50	2144261
150	6.50	1200	7.800	24	0.040	3.75	2144387
160	6.05	1200	7.260	24	0.040	4.00	2144250
170	6.00	1200	7.200	24	0.040	4.25	2144335
180	5.45	1200	6.540	24	0.040	4.50	2144249
200	4.60	1200	5.520	24	0.040	5.00	2144248
220	3.20	1200	3.840	24	0.040	5.50	2144214
230	3.10	1200	3.720	24	0.040	5.75	2144342
240	3.00	1200	3.600	24	0.040	6.00	2144215
260	3.00	1200	3.600	24	0.040	6.50	2144351
280	2.80	1200	3.360	24	0.040	7.00	2144369

Please note that all dimensions are nominal.

Additional Information.

Vapour Resistivity.

The product has a nominal vapour resistivity of 5 MNs/gm.

Environmental credentials.

- ISO 14001 - Environmental Management Systems (EMS) certified. Certificate number: EMS 646508
- Contains no ozone-depleting substances or greenhouse gases. For more information, please refer to the Environmental Product Declaration (EPD).
- Manufactured from up to 84% recycled glass.
- Generic BRE Green Guide Rating of A+.

Standards and Approvals.

Manufactured in accordance with:

- BS EN 13162:2012(+A1:2015) Thermal insulation products for buildings - Factory made mineral wool (MW) products.
- BS EN 13172: 2012 Thermal insulation products - Evaluation of conformity.
- BS EN ISO 9001 - Quality Management Systems (QMS). Certificate number: FM 02264.

Certifications.

- UKCA certified to BS EN 13162:2012+A1:2015. Certificate number: 0086 CPR 469699.
- CE marked to EN 13162:2012+A1:2015. Certificate number: 0751-CPR-399.0-01.

A copy of the product Declaration of Performance (DoP) can be downloaded from the Superglass website.

Handling & Storage.

Due to its physical characteristics, Cladding Mat 40 is quick and easy to handle and install.

The product is supplied compression packed in polythene to provide short term protection only. For long term protection, the product must be stored indoors, or under a waterproof covering and off the ground to protect from weather damage. The product should not be left permanently exposed to the elements.

All Superglass products are non-hygroscopic, will not rot, degrade, or sustain vermin and will not encourage the growth of mould, bacteria, or fungi.



Superglass Insulation Ltd | Thistle Industrial Estate | Kerse Road | Stirling | FK7 7QQ | UK

CM4003

Technical

Hotline: 0808 1645 134

Email: technical.stirling@etexgroup.com

Customer Services

Tel: 01786 451170

Email: customerservice.stirling@etexgroup.com

Social

✉ superglassinsulationuk

in [superglassuk/](https://www.linkedin.com/company/superglassuk/)

f [superglass_uk](https://www.facebook.com/superglass_uk)

superglass.co.uk

All rights are reserved, including those of photomechanical reproduction and storage in electronic media. Commercial use of the processes and work activities presented in this document is not permitted. Extreme caution was observed when putting together the information, texts and illustrations in this document. Nevertheless, errors cannot quite be ruled out. The publisher and editors cannot assume legal responsibility or any liability whatever for incorrect information and the consequences thereof. The publisher and editors will be grateful for improvement suggestions and details of errors pointed out.

etex inspiring ways of living