

TECHNICAL DATA

REGUPOL SONUS CORE 5

formerly REGUPOL 7210 C

Product

Cost-effective rubber bound underscreed material specifically introduced for the PCT (Pre-Completion Test) market for the isolation of all screed types.

REGUPOL sonus core 5 meets the requirements of Approved Document E (England & Wales), Technical Booklet G (Northern Ireland) and Section 5 of the Building Regulations (Scotland).

Features and Benefits

- Excellent impact and airborne performance
- Offers long term performance without collapse or “bottoming” out under high point loads
- Minimal creep, even under high loads
- Resistant to ageing and deformation
- Quick and easy to install with no need for separate perimeter strips
- Minimises construction heights
- High quality and exact material thickness guaranteed
- Suitable for use with underfloor heating
- Protects expansion joints
- Mildew and moisture resistant
- When used with a sand/cement screed; there is no requirement to use a DPM
- Product manufactured using recycled materials and 100% recyclable
- Manufacturing facility certified to ISO 9001, ISO 45001, ISO 14001, ISO 50001

Applications

REGUPOL sonus core 5 has been specifically developed for controlling impact and airborne sound in the following:

- Apartments
- Student accommodation
- Care homes
- Hotels
- Schools
- Commercial facilities

Suitable for both sand/cement and proprietary flowing screeds.

Physical information

Sheet width	1150mm	
Sheet length	2250mm	
Material thickness	5mm	
Weight per sheet / per m ²	9.4kg	3.6kg/m ²
Material composition	Recycled rubber	



MADE IN GERMANY



¹ Tested as per French VOC regulation décret n° 2011-321

Acoustical Performance*	Standard	Result	Comment
45 mm anhydrite screed, REGUPOL sonus core 5 , 140 mm concrete slab	DIN EN ISO 10140-3 DIN EN ISO 717-2	ΔL_w 21 dB $L_{n,w}$ 55 dB	Test report 152-H114-42557
REGUPOL sonus core 5 , Heavyweight Standard Floor	BS EN ISO 140-8: 1998	$L'_{nT,w}$ 46 dB $D_{nT,w}$ 49 dB	Mean value**

*Assembly from top to bottom

** Independent test reports available upon request.

Material properties	Standard	Result
Density		approx. 700 kg/m ³
Elongation at break	DIN EN ISO 1798	≥ 40 %
Tensile strength	DIN EN ISO 1798	≥ 0.4 N/mm ²

Thermal behaviour	Standard	Result
Thermal conductivity	DIN EN 12667	$\lambda = 0.06$ W/(mK)
Thermal resistance	DIN EN 12667	$R = 0.083$ (m ² K)/W
Temperature resistance		-20 to +60° C

Fire behaviour	Standard	Result
Fire classification	DIN EN 13501-1	E

Health protection	Standard	Result
VOC	DIN EN 16516	compliant with EU-LCI list and German AgBB scheme; "A+" as per décret n°2011-321

Installation

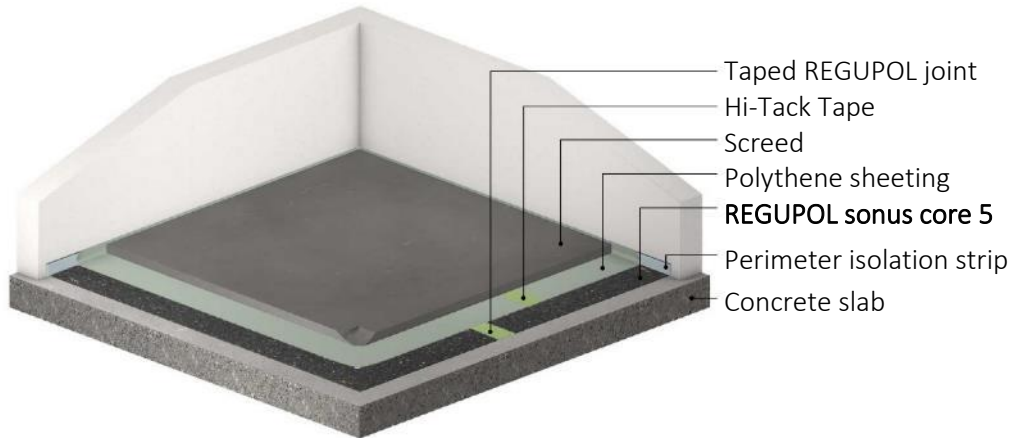
Full installation guidelines are available upon request.

Storage

REGUPOL sonus core should be protected from moisture during storage, transport and installation.

Floor assembly example

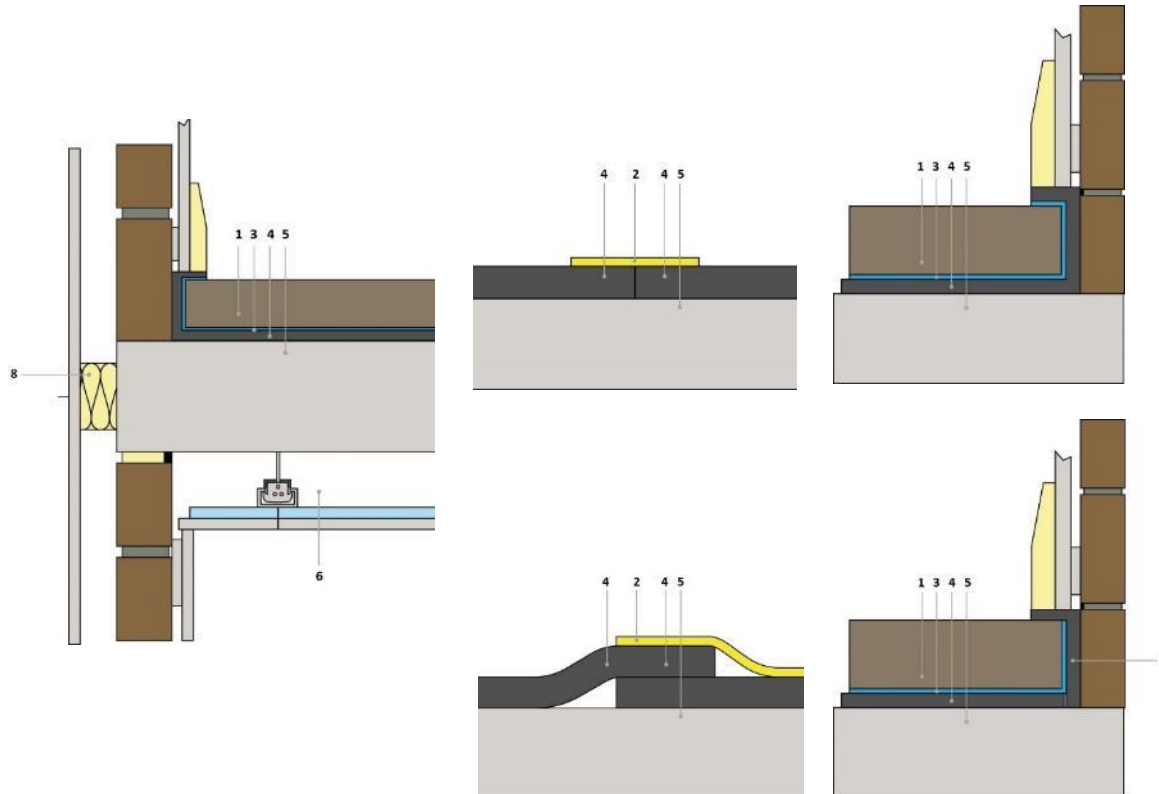
Free flowing screed



Construction Detail

Joint Details

Perimeter Details

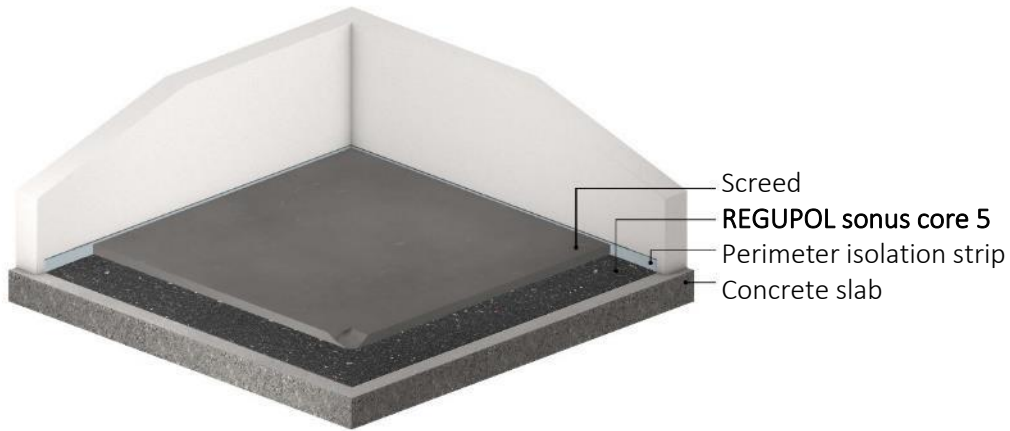


- 1 Screed
- 2 Hi-Tack tape
- 3 Polythene sheeting
- 4 **REGUPOL sonus core**

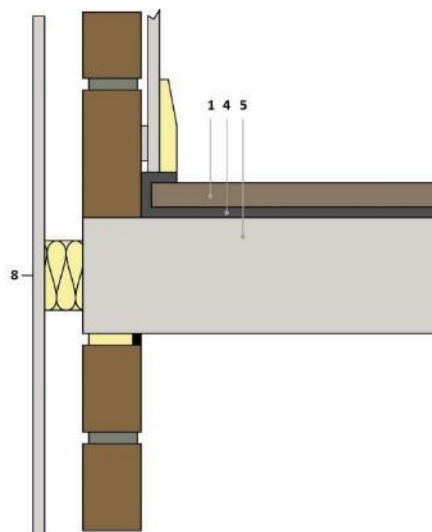
- 5 Concrete slab
- 6 Suspended ceiling system
- 7 Perimeter isolation strip
- 8 Acoustic cavity closer

Floor assembly example

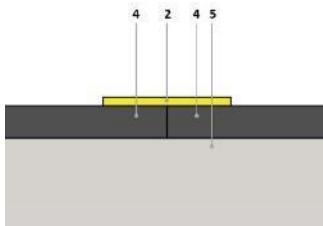
Cement screed



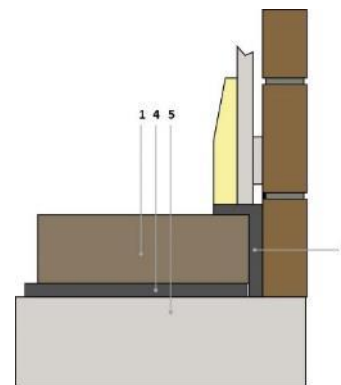
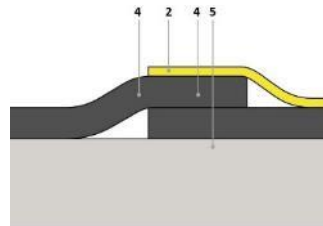
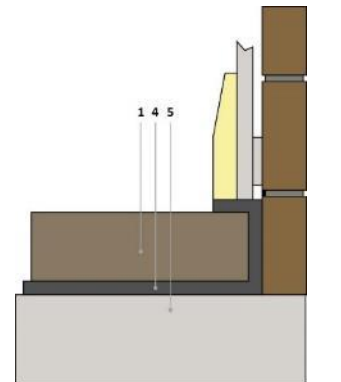
Construction Detail



Joint Details



Perimeter Details



- 1 Screed
- 2 Hi-Tack tape
- 4 REGUPOL sonus core

- 5 Concrete slab
- 7 Perimeter isolation strip
- 8 Acoustic cavity closer

IMPORTANT: The information provided within this document is believed correct and to the best of our available knowledge at its revision date and is provided as suggestion for safe handling, storage, transportation, use and disposal. The information should not be considered obligation in respect of warranty of (technical) performance, quality (specification) or suitability for any application or design. The customer must satisfy themselves the product (or draft specification) are relevant and suitable for their need and design intent. Prospective users should test a sample of product under their own conditions to satisfy themselves of its suitability for intended purpose and that expert advice be sought where different applications are contemplated. Due to our policy of continuous improvement we reserve the right to alter or amend published specification or design without prior notice. Reproduction of any part of this publication in any manner is not permitted without our prior written consent.