

# Jabfill High Performance (HP)

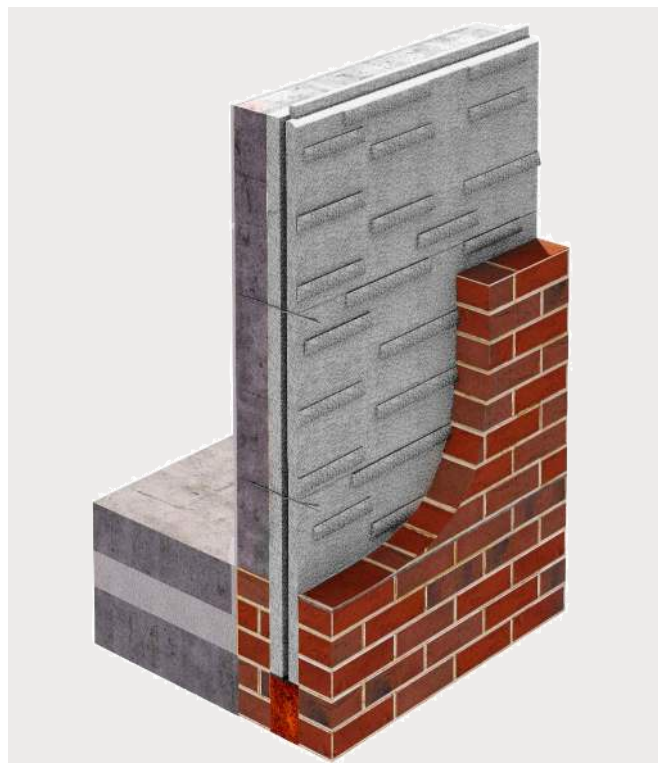
## Technical Datasheet

BEWI Jabfill HP is a full fill cavity-wall insulation system manufactured using high performance (HP) expanded polystyrene. It is designed to be installed into new masonry walls\* to meet or exceed U-value requirements.

The insulation boards have a fluted face and a tongued and grooved edge profile which is fully-interlocking; the insulation fills the cavity and does not require special clips or wall ties.

Jabfill HP is supplied as EPS 70 as defined in BS EN 13163 – Reaction to Fire Class E, containing a flame-retardant additive.

*\* Where masonry includes clay and calcium silicate bricks, concrete blocks, natural and reconstituted stone blocks.*



### Key Benefits

- High Performance Expanded Polystyrene
- Low Lamda 0.032 W/mK
- Lightweight and easy to install
- Can be installed below DPC level
- Durable and rot-proof
- Flood resilient
- Permanent insulation for the life of the building
- 100% recyclable

### Dimensions

**Standard size:** : 450 x 1200mm nominal; 476 x 1219mm actual (including tongues and bottom edge detail).

**Standard Thickness:** 100, 125 and 150mm

### Design

Features: Tongue and grooved on all four edges. The external face has a series of 5mm moulded drips, and the bottom external board edge has a continuous angle fillet drip which overlaps the top of the board below when installed. This design feature helps to shed any rainwater ingress away from the lateral joints.

For more information:

[bewi.com](http://bewi.com) e-mail: [sales.insulation.uk@bewi.com](mailto:sales.insulation.uk@bewi.com) Tel: 0870 600 3666

© BEWI TDS-05W-JFI-V01 JULY 2024

# BEWI

# Jabfill High Performance (HP)

## Technical Datasheet

### U-values

The table below provides indicative U-values achieved using 100, 125 and 150mm thickness of Jabfill HP. Their calculation complies with the calculation procedures contained in the “conventions for U-value calculations” document accompanying the Building Regulations. This takes into account mortar joints, air gap connections, wall ties and linings as necessary.

The values given are based on a thermal conductivity of 0.032 W/mK for the insulation. For calculation purposes, the flutes on the external face of the boards are ignored giving calculated board thicknesses of 95, 120 and 145mm.

JabFill HP Thickness	12.5mm Plasterboard on dabs		13mm Lightweight Plaster	
	Inner leaf 100mm Super Aerated Concrete Block (0.11W/mK)		Inner leaf 100mm Super Aerated Concrete Block (0.11W/mK)	
	Outer Leaf 102.5mm Brick	Outer Leaf 100mm Stone	Outer Leaf 102.5mm Brick	Outer Leaf 100mm Stone
100 mm	0.24	0.24	0.25	0.25
125 mm	0.20	0.20	0.21	0.21
150 mm	0.17	0.18	0.18	0.18

### Accreditation

<b>CE, UKCA, UKNI marking</b>	BEWI has taken the responsibility of CE, UKCA, UKNI marking the product in accordance with harmonised European Standard BS EN 13163: 2012 + A2-2016. Declaration of Performance is available on request.
<b>Quality</b>	All BEWI products are manufactured in production facilities which are certified to ISO 9001 Quality Management.
<b>Environmental Responsibility</b>	All Bewi manufacturing facilities are ISO 14001 certified.
<b>Compliance</b>	Pro-Foil Cavity Wall conforms to the required properties as defined in BS EN 13163:2012 – Thermal insulation products for buildings – Factory made expanded polystyrene (EPS) products – Specification.
<b>Fire</b>	Jabfill HP is supplied as flame retardant material, Euroclass E, as standard.

For more information:

bewi.com e-mail: sales.insulation.uk@bewi.com Tel: 0870 600 3666